

Y-018A | A Maniple

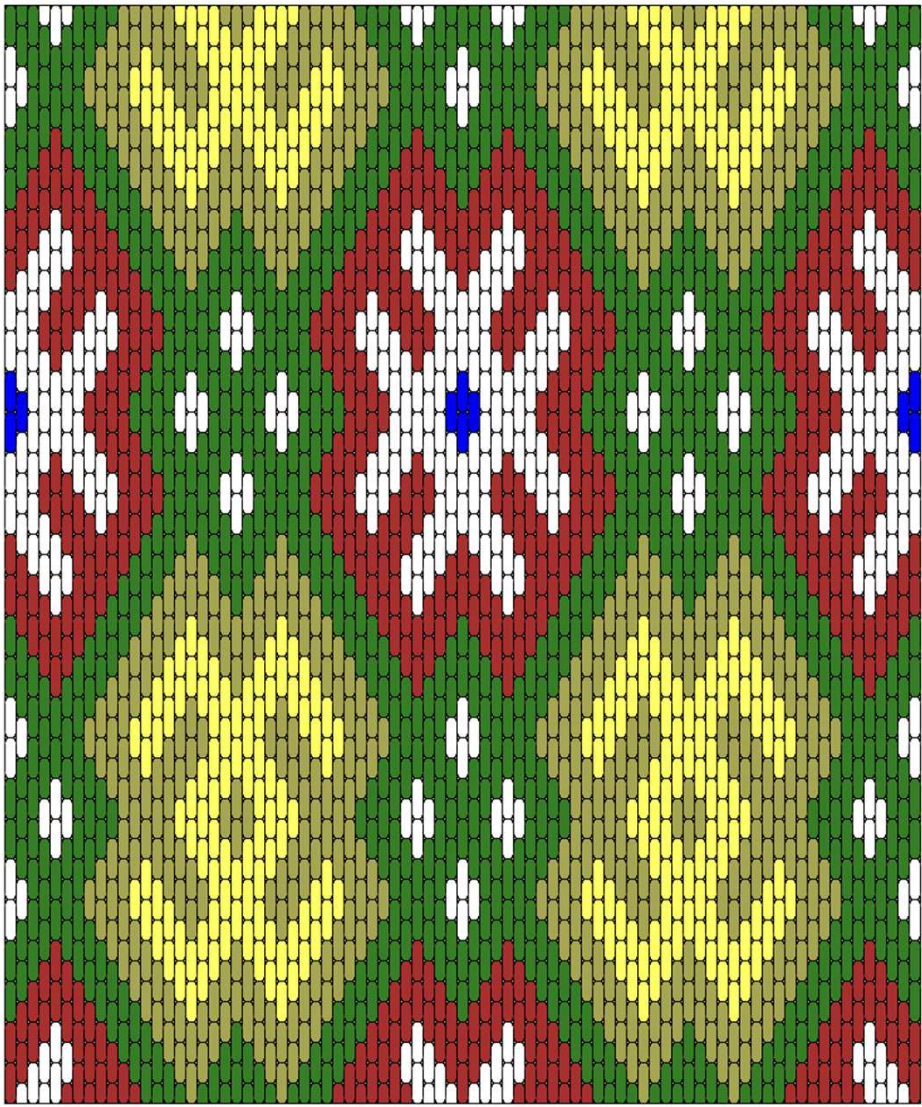
# A Stitch Out of Time

Date/Period  
14th Century

Country  
Germany

Museum  
Victoria & Albert Museum, London

Catalog Number  
1262-1864



“Maniple, made out of part of stole, of canvas, embroidered with coloured silk in tent (cushion stitch), with pattern of repeated lozenge-shapes, filled in with counter-changed angular devices. The ends of worn gold thread woven fabric one of them with lion rampant on crimson field.  
German. 14th cen. 3ft. 11 in. by 3 in. Bock Colln. 1262.-1864.”  
27 thread per inch evenweave

The V&A has only one black and white photo to work from, because of this, the colors are unknown. The ones shown indicate areas of light and dark accurately, but are otherwise conjectural.

The official description labels this as tent/cushion stitch. However, looking at the photo this is definitely brick stitch as shown.

Note: The pattern to the left shows the total width of the original embroidery.

