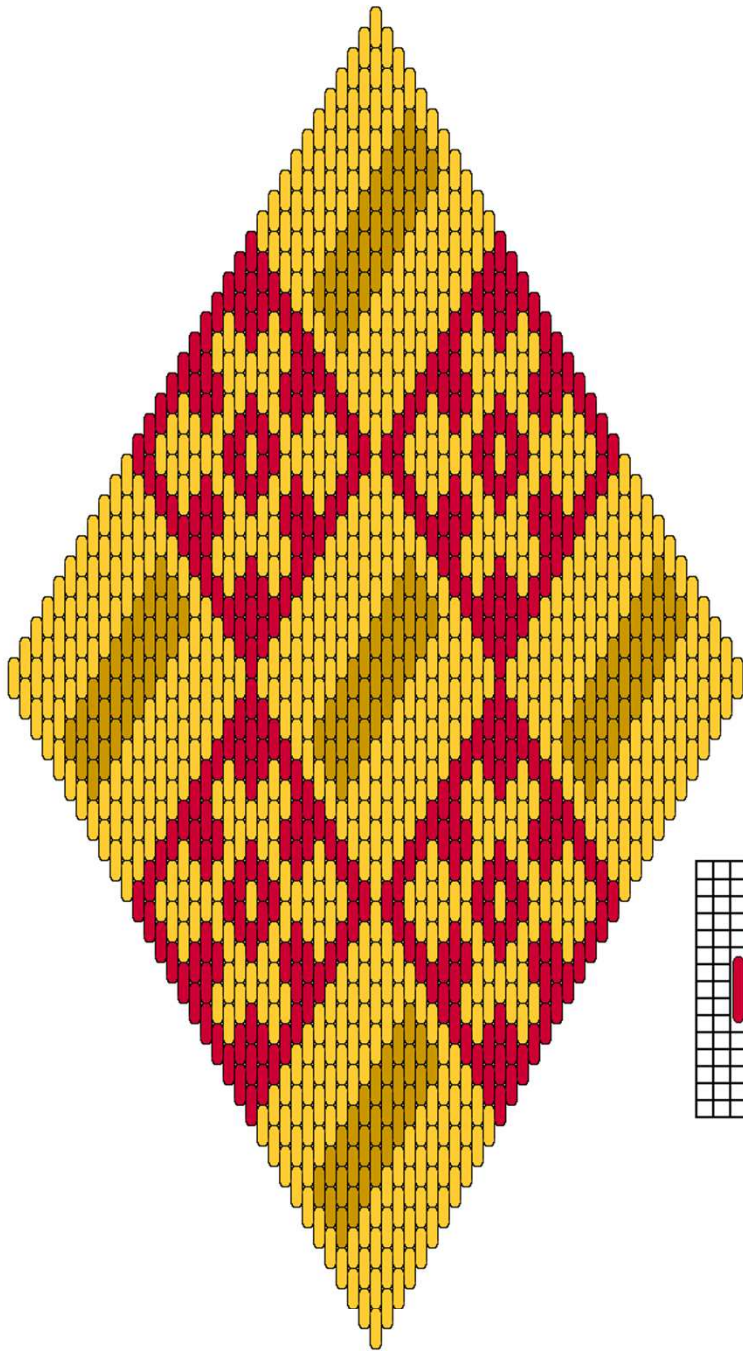


Y-014B	A Reliquary Bag
--------	-----------------

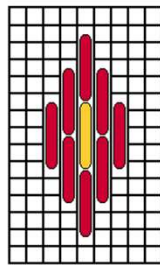
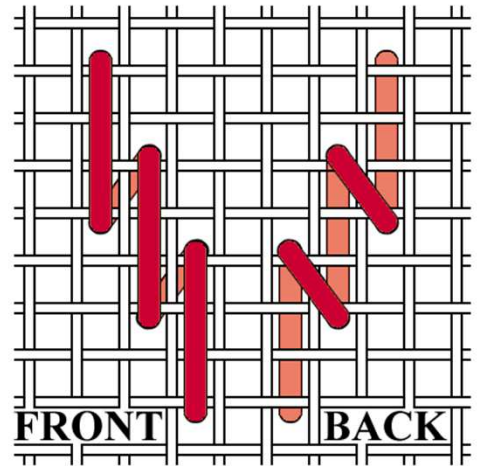
A Stitch Out of Time

Date/Period 14th-15th Century	Country Europe	Museum Collegiate Church of Soignies, Belgium	Catalog Number D 2.8
----------------------------------	-------------------	--	-------------------------

"Bag (silk embroidery on wool evenweave canvas) with woven lanyard (silk) and 2 Turkish knots with silk tassels"
36 thread per inch evenweave fabric.



- Dark red-brown silk
- Light gold/tan silk
- Dark tan silk



Note: Working from photographs means that I have to make some assumptions based on what I can see.

This is a small reliquary bag, embroidered in silk. The museum description describes the ground fabric as wool canvas, but it appears to be linen in the high-resolution images available.

This is a very small bag, 2 3/4 inches on a side. The bag closes with a drawstring, and is decorated with tassels at the two bottom corners.

